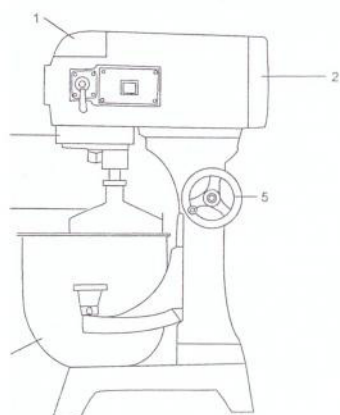


## PARTS CATALOG OVERVIEW

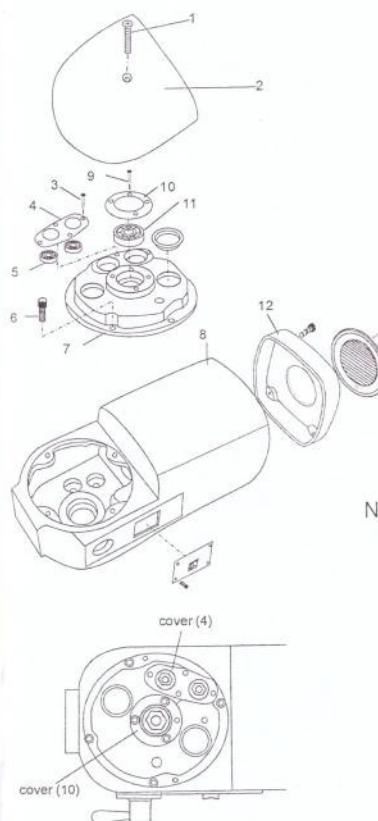


Item	Description
1	cover
2	rear cover
3	ring
4	Mixing device
5	French
6	bowl

### NOTES:

- The no using pipe line sprays to wash the mixer.
- Wet hand in no using contact switch with power supply plug.
- While maintaining the mixer, must pull out first the power supply plug, and from profession the personnel maintains.

Figure 1 TRANSMISSION CASE

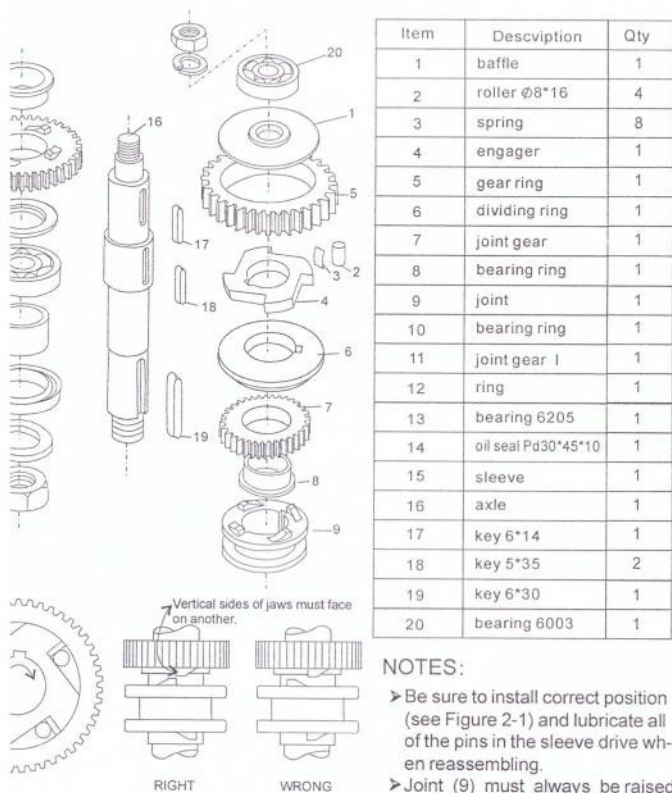


Item	Description	Qty
1	screw M6*45	1
2	cover	1
3	screw M5*8	4
4	cover	1
5	bearing 6201	2
6	screw M6*25	4
7	end cover	1
8	body	1
9	screw M5*8	3
10	cover	1
11	bearing 6003	1
12	rear cover	1

### NOTES:

- Machine at a factory hour have added to note the superior quality lubricates the grease, usually the circumstance bottom can use for several years, but machine is after maintaining, must replace the lubrication grease.
- Fill with the lubrication grease empress, please the cover the tight noting the oil bore cover.

Figure 2 AXLE

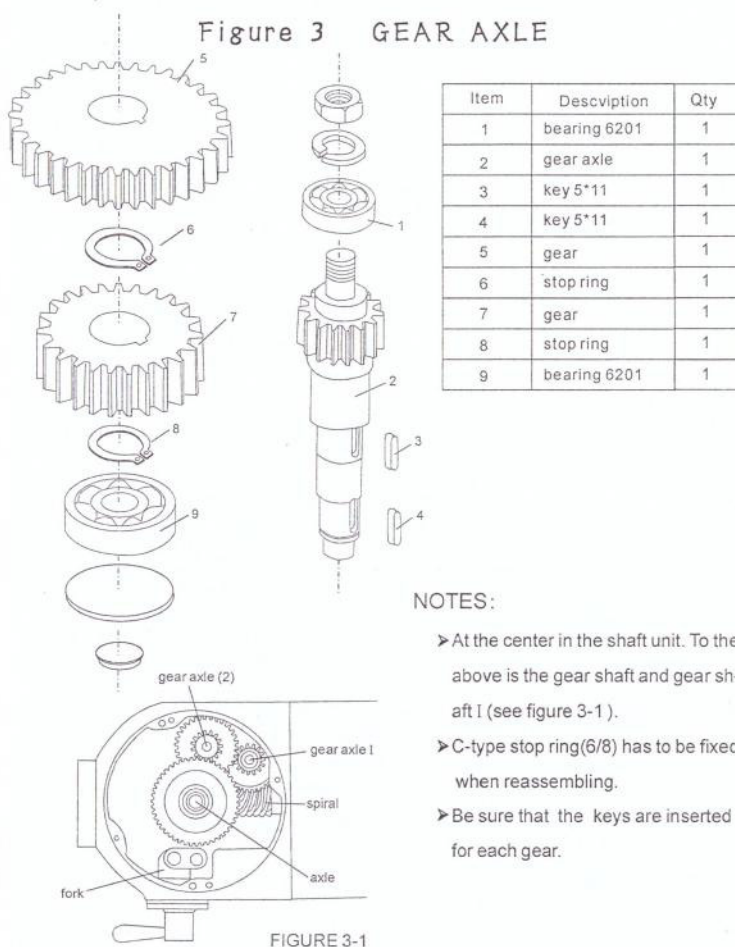


NOTES:

- Be sure to install correct position (see Figure 2-1) and lubricate all of the pins in the sleeve drive when reassembling.
- Joint (9) must always be raised and lowered smoothly. Be sure joint sleeve as shown in Figure 2-2.
- Check oil seal (14), if serious oil leaks from drip cup.

FIGURE 2-2

Figure 3 GEAR AXLE

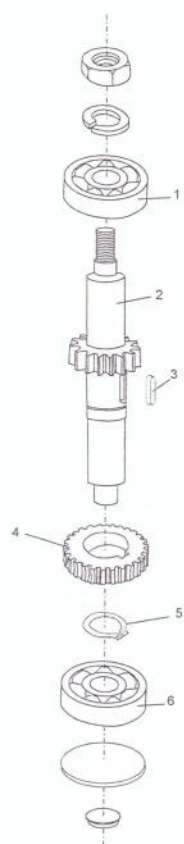


NOTES:

- At the center in the shaft unit. To the above is the gear shaft and gear shaft I (see figure 3-1).
- C-type stop ring(6/8) has to be fixed when reassembling.
- Be sure that the keys are inserted for each gear.

FIGURE 3-1

Figure 4 GEAR AXLE I

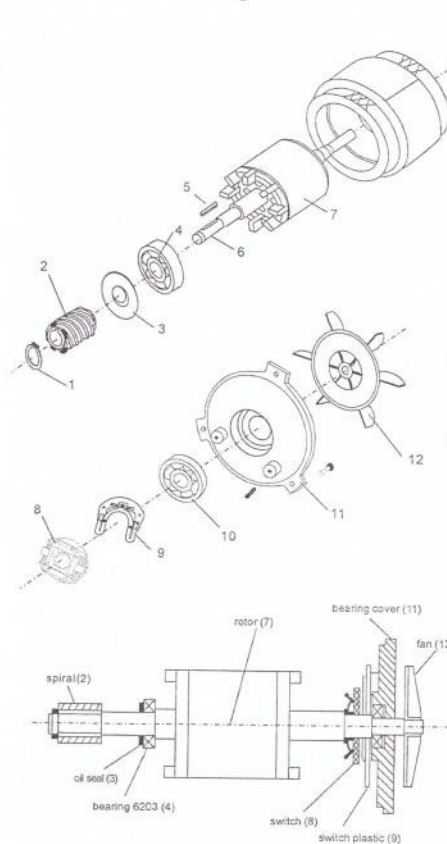


Item	Description	Qty
1	bearing 6201	1
2	gear axle	1
3	key 5*14	1
4	gear	1
5	stop ring	1
6	bearing 6201	1

NOTES:

- C-type stop ring(5) has to be fixed when reassembling.

Figure 5 MOTOR UNIT



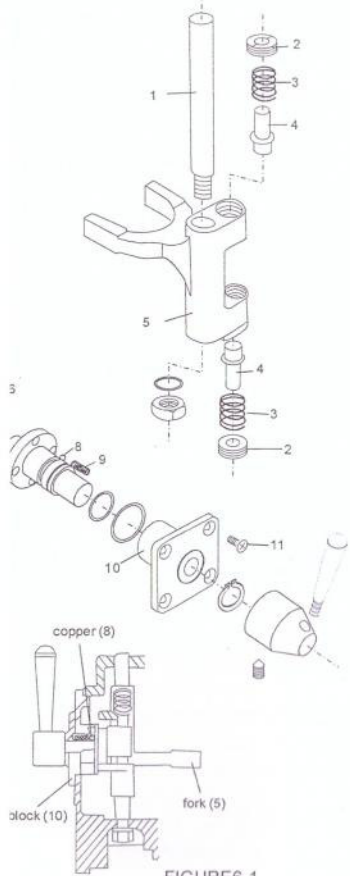
Item	Description	Qty
1	stop ring	1
2	spiral	1
3	oil seal	1
4	bearing 6203	1
5	key 4*22	1
6	axle	1
7	rotor	1
8	switch	1
9	switch plastic	1
10	bearing 6203	1
11	bearing cover	1
12	fan	1

NOTES:

- If the motor does not work, first verify the power source and connection. Next, check for damaged or faulty wiring or connections inside the mixer. A noworking motor may be the result of inappropriate voltage, broken wires, a defective capacitor, or a defective centrifugal governor. Motor damage may also be caused by bowl overload during mixing.
- Motor set includes motor axle(6), rotor(7) and stator.
- Figure 5-1 is component system diagrams of motor.

FIGURE 5-1

Figure6 FORK AND SPEED SHAFT



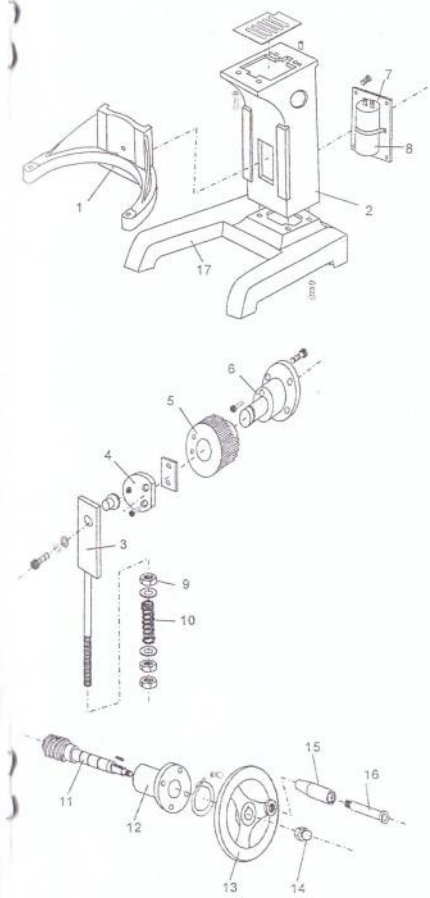
Item	Description	Qty
1	axle	1
2	nut	1
3	spring	1
4	shaft	1
5	fork	1
6	pin 3*20	1
7	eccentricity knot	1
8	steel ball	3
9	speed spring	3
10	speed block	1
11	screw M5*10	1
12	shaft	1

NOTES:

- The speed selector / shifting mechanism is designed for simplicity and reliability. It features three mixing speeds.
- Speed selection is made by aligning the pointer of the shifter handle with the proper number on the shift selector. Stop the mixer before making any speed changes.
- Apply sealant to the shift selector assembly, and install it.

FIGURE6-1

Figure 7 MACHINE SEAT, STAND AND HANDWHEEL TYPEBOWL LIFTER UNIT



Item	Description	Qty
1	arm	1
2	stand	1
3	slide	1
4	plate	1
5	gear	1
6	support seat	1
7	capacitor board	1
8	capacitor 200uF	1
9	nut M10	3
10	spring	1
11	spiral	1
12	french support	1
13	handwheel	1
14	nut M10	1
15	handle	1
16	handle screw	1
17	machine seat	1



Figure 8 HANDGRIP TYPE BOWL LIFTER UNIT

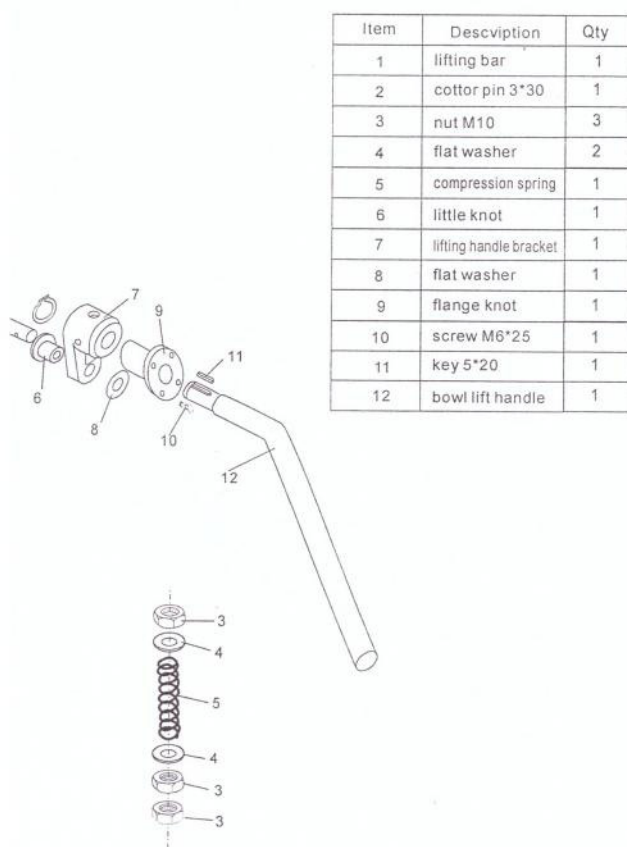


Figure 9 TURNING PLATE AND MIXING AXLE

